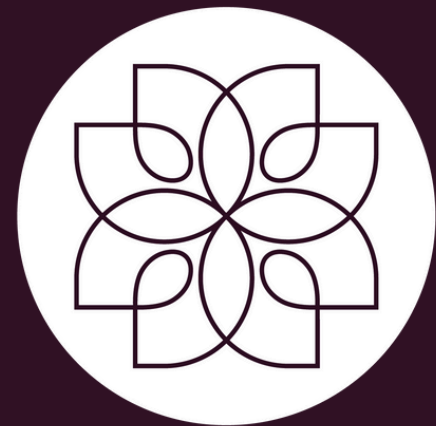


# PRIMARY TEACHER



ABINGDON  
HOUSE SCHOOL

VACANCY INFORMATION PACK





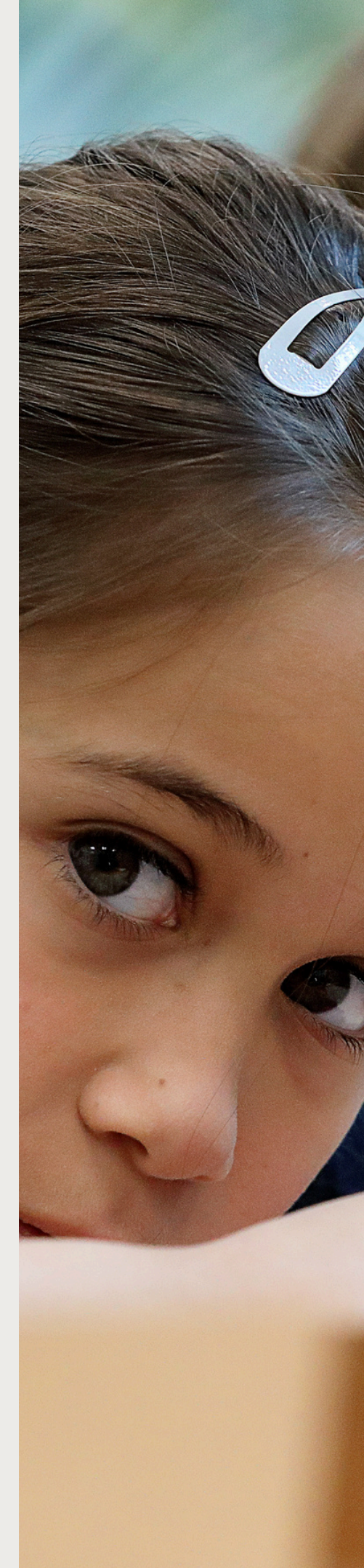


# Introducing *Abingdon House* *School*

Thank you for your  
interest in our school.

Abingdon House School combines an integrated therapeutic approach with a mainstream-style curriculum, tailored to each child's individual needs. Our students have unique learning profiles linked to dyslexia, autism, and social communication difficulties.

Class sizes are capped at 10 and include students of mixed ages (generally across two year groups). Our curriculum caters for students working academically between Reception and Year 9.



CONFIDENCE | COMPETENCE | CREATIVITY | CHARACTER



# Introducing *Abingdon House* *School*

We are part of the Cavendish family of schools.

Cavendish Education is a family of independent co-educational day schools, boarding schools, and colleges for students with special educational needs between the ages of five and 21.

Cavendish has been transforming common perceptions of specialist education with an unparalleled approach that sits between mainstream and traditional SEN schools. All Cavendish schools challenge the meaning and implications of neurodiversity, with a curriculum that supports students to thrive – academically, socially, and emotionally.

CONFIDENCE | COMPETENCE | CREATIVITY | CHARACTER







# The role *at a glance*

## Primary teacher

- This will be a full time role starting **23 February**
- You'll be at our Prep School campus, working with students aged 7-13
- You'll be based in South Kensington, Central London
- You'll work as part of a multidisciplinary team to develop and deliver educational programmes for children with SEN. In addition to teaching, you'll participate in regular assessments, progress reports, and appraisals, and contribute to overall school life with student supervision and safeguarding support.

CONFIDENCE | COMPETENCE | CREATIVITY | CHARACTER







# *Key responsibilities*

The **main aspects** of this role are:

## **Pupil learning and support**

- Primary responsibility for a form class of ~10 students
- Preparation and adaptation of the curriculum to meet students' individual special educational needs
- Delivery and assessment of educational programmes across the school
- Provision of targets for integration into the curriculum as part of each pupil's IEP and/or EHCP, in consultation with parents and therapists

## **Assessment, reports, and appraisals**

- Assessing, recording, and reporting on pupil progress
- Providing progress reports for annual reviews
- Liaising with external professionals, such as LAs and educational psychologists
- Participating in appraisals as and when required
- Maintaining up to date continuing professional development

## **Contributing to school life**

- Supervising students throughout the school day, including during lunch, trips and unstructured periods
- Participating in regular staff and teacher meetings
- Participating in whole-school events, including those outside usual working hours
- Providing cover when other staff members are unavailable
- Provide safeguarding support both on the school premises and during external activities

CONFIDENCE | COMPETENCE | CREATIVITY | CHARACTER







# Person *specifications*

We're looking for an **experienced and compassionate teacher** to join our school. You'll be able to show these **essential skills and requisite experience**:

- QTS certification
- 2+ years of experience teaching at primary level
- IT fluency for classroom and administrative work, preferably with experience using Google Suite
- Knowledge of relevant risk management, health and safety, and child protection practices
- Excellent communication skills
- Demonstrated ability to work as part of a team
- DBS
- Experience working with children with SEN is preferable, but not essential

CONFIDENCE | COMPETENCE | CREATIVITY | CHARACTER







# Role details & how to *apply*

- Salary: Competitive, depending on experience
- Working schedule: 37 weeks per year (term time only), five days per week.
- Benefits include workplace pension scheme, lunch provided daily when on-site, and breakfast provided twice weekly when on-site

If you have any questions about the role or would like to apply, please email [amita.bhudia@abingdonhouseschool.co.uk](mailto:amita.bhudia@abingdonhouseschool.co.uk).

CONFIDENCE | COMPETENCE | CREATIVITY | CHARACTER

